

**Non-Profit**


**Membership  
Based**

**Conservation  
and Trails  
Programs**

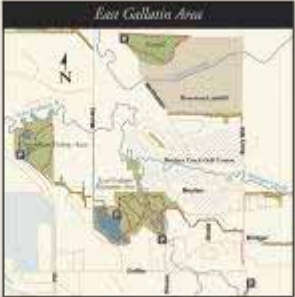
# Dedicated Staff



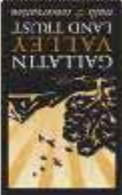
# Main Street to the Mountains Trails




*Southeast Bozeman*



*East Gallatin Area*



**Trail Map**  
GALLATIN VALLEY LAND TRUST



**Map Legend**

- Trails
- Paved Shared-Use Paths
- Paths
- Streets
- Trail Parking
- Grounded for Private Selling
- Parks & Open Space
- Elementary Public Schools
- Montana State University
- State Lands
- Montana Landfill Property

**Trail Safety & Etiquette**

**Talk to us for More Information On:**

**Wilderness Paths:**

- Stay on the trail
- Keep on vehicle
- Report potholes or debris
- Pick up litter
- Report maintenance issues

**Gallop Paths:**

- Stay right and pass on left
- Walk where when passing
- Pedestrians have right-of-way
- Stay alert in corners
- Use one side on muddy trails

**Drop Outdoors Paths:**

- Clean up after your dog
- Look dogs off leash under control

**Thank You to our Sponsors**

The Main Street to the Mountains trail system is a true community effort. Several local groups, including Gallatin Valley Land Trust, have worked to help us construct, build, and improve the trail system. We need to continually maintain the trail system. We need to periodically add the lines of financial and non-financial support. We need to periodically add the lines of financial and non-financial support. Contact us to see how you can help.

**Sponsors:** Northern Light Imaging, ACE Hardware, 4500-PRINTER, The Association of Landmark, BSA BOYS & GIRLS

**Map Legend**

- Trails
- Paved Shared-Use Paths
- Roads
- Streets
- Trail Parking
- Parks & Open Space
- Bozeman Public Schools
- Montana State University
- State Lands
- US Fish & Wildlife Service
- Gallatin National Forest
- Bozeman Wastewater & Landfill Property



# Why Trails?



commune with nature  
recreate  
exercise  
connect with each other  
relax



alternative transportation  
economic development  
safe routes to school  
property values  
quality of life

*“Build it and they will come...”*

# Vision



**Dare to Dream Big**

**Research**

**Trail Easements**

**Local Government Plans**

**Development Review**

**Connecting Communities**

# GVLT Fundraisers

**Ski-A-Thon**

**National Trails Day**

**Longest Day of Trails**

**Trails Mix**



# Quality Volunteers

Fun  
Rewarding  
Productive



# Burke Park



## **Grass Roots Effort**

**Federal Funds (Forest Service and City of Bozeman)**

**State Land and Water Conservation Funds**

**Trails Improved by GVLT**

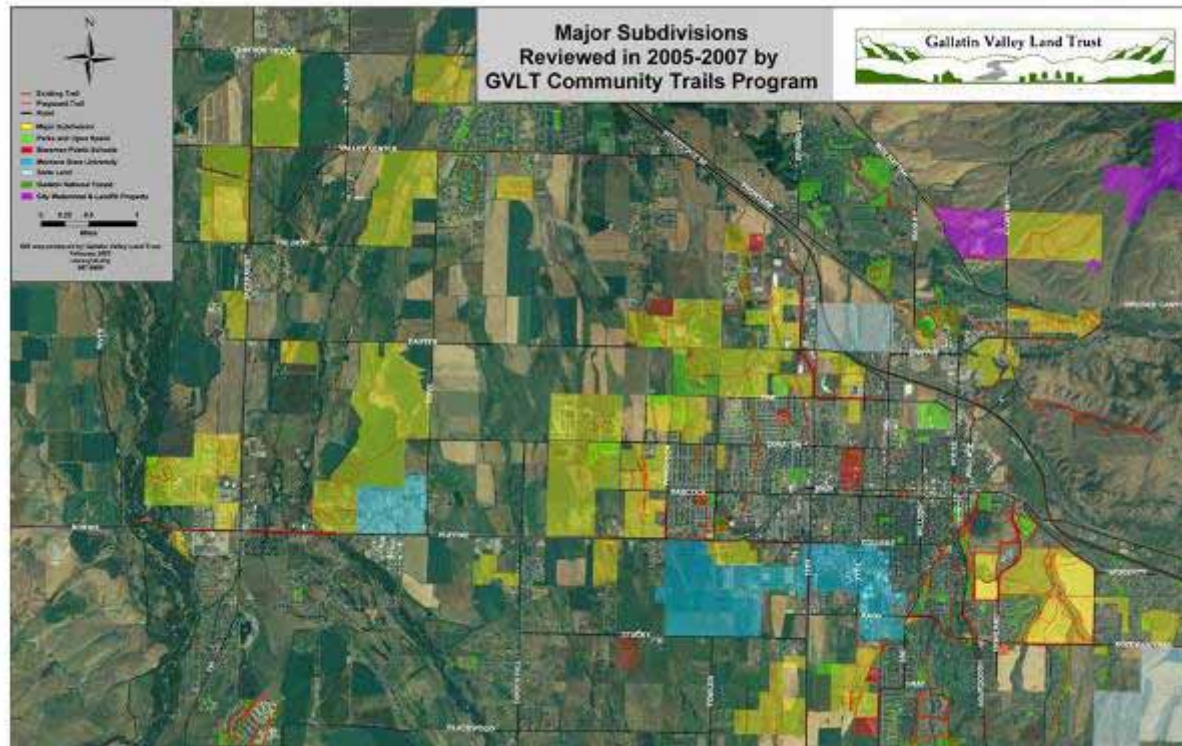
**Funded with Grants and Donations**

**Jointly Managed by City and GVLT**



# Development Review

## Collaboration with Developers & Planners



**“Trail availability outranked 16 other options**, including security, ball fields, golf courses, parks, and access to shopping or business centers,” according to a **2002 National Association of Realtors/National Association of Home Builders survey**. Only highway access was ranked as a more important amenity by the 2000 homebuyers surveyed.

# Kiosk Project

Recreational Trails Grant

Eagle Scout Project

Montana Conservation  
Corps

Volunteers

Corporate Sponsors



Gallatin Valley Land Trust • P.O. Box 7021  
Bozeman, MT 59771 • 406-587-8404  
landtrust@gvlt.org • www.gvlt.org

*Our sponsoring partners:*

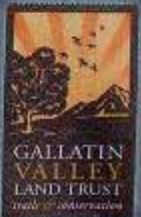
graphic design provided by  www.madrygalski.net • 202-426-0

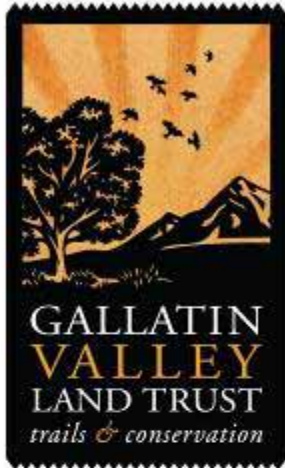


Eagle Scout  
Service Project  
Dillon Nikolaopoulos  
Troup #677



Montana Fish,  
Wildlife & Parks





# Trail Information Kiosks

With the Main Street to the Mountains trail system growing rapidly and hosting tens of thousands of trips every year by pedestrians, bicyclists and dog walkers, it's time to provide better information for everyone who uses and enjoys the trails.

GVLT's Community Trails Program is building and installing trail information kiosks throughout the trail system to display maps, trail etiquette guidelines and other useful information.

This project is being funded through a Montana Fish Wildlife and Parks Recreational Trails Program grant combined with donations from local businesses.

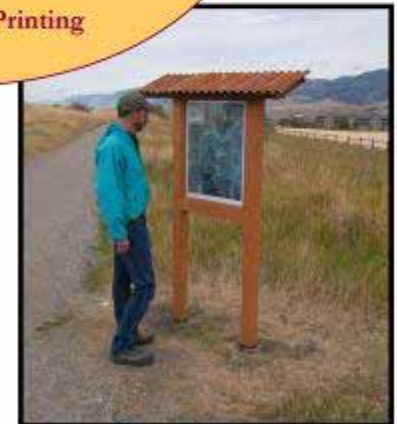


**Sponsor a Kiosk!**  
 \$ 1000 – Three Year Sponsorship  
 \$ 500 – Three Year Sponsorship Renewal

**What Does a Kiosk Cost?**  
 \$ 330 Materials  
 \$ 700 Construction & Installation  
 \$ 700 Project Management  
 \$ 150 Display Design  
 \$ 120 Display Printing



← Your logo here



# Ice House Park

## Recreational Trail Program

## Trust for Public Land

## Open Space Bond

## Private Donations



# Langohr Park Stream Restoration



**Parkland Improvement  
Grant**

**Future Fisheries Program**

**Volunteers**



**National Fish and Wildlife  
Foundation**

**City Parks Department**

**Donations**



# Three Bridges Project

Recreational Trails Program

Private Donations and Memorials

Materials

Engineering

Permitting



# Langohr Climbing Rock



**Parkland Improvement  
Grant**

**Memorial  
Contributions**



**Montana Nutrition  
and Physical Activity  
Program**

**Volunteers**

# Dog Pooper Stations

Recreational Trails  
Program

City of Bozeman

Montana  
Conservation Corps

Sponsor-A-Station



# Drinking Horse Mountain Trail



**Land Donated to US Fish and Wildlife Service**

**Gallatin National Forest**

**Gallatin Valley Land Trust**

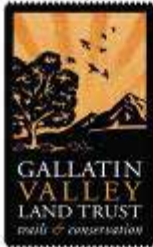
**Friends of the Fish Tech.**

**Montana Outdoor Science School**

**Mountain Sky Guest Ranch**



# Drinking Horse Mountain Flyer



## Drinking Horse Mountain Trail Coming This Summer... With Your Help!



*The "M" may be Bozeman's most popular hike, but GVLTL, MOSS and the Friends of the Fish Technology Center are bringing you a new hike that we think will be even better!*

If we can raise \$30,000 in the next couple months we'll start construction this Spring and you can decide for yourself.

If you've ever failed to find a parking spot at the "M" trailhead we hope you'll be excited at the prospect of a great new trail, with its own parking area, right across Bridger Canyon Road. Starting at the entrance to the Fish Technology Center and the new Montana Outdoor Science School campus, the trail will provide a two-mile, out-and-back hike, dropping down to a pedestrian bridge across Bridger Creek before climbing nearly 700 feet to the Drinking Horse Mountain summit.

Drinking Horse Mountain will be a great new day-hiking destination as well as an outstanding outdoor classroom for environmental education. From willows and cottonwoods along Bridger Creek, to rocky outcrops, pine forest and wildflower-decorated ballades, the new trail will offer great variety in a short distance.

**A generous donor will match \$50 for every \$100 we raise!**

\$1,000  
  \$500  
  \$250  
  \$100  
  \$75  
  Other \_\_\_\_\_  
 Name \_\_\_\_\_ Address \_\_\_\_\_ City, State, Zip \_\_\_\_\_  
 Please contact me about events and updates.  
  Email \_\_\_\_\_  
  Phone \_\_\_\_\_  
 Check  
  MasterCard  
  Visa  
  Discover  
 Card Number \_\_\_\_\_ Exp. Date \_\_\_\_\_

You can also call the GVLTL office during business hours to donate by credit card. Or donate online at [www.gvltr.org](http://www.gvltr.org).  
 Please make checks payable to GVLTL. GVLTL is a nonprofit 501(c)(3) organization. Your contribution is tax-deductible.



## Please Help Us Reach the Summit!

*We hope to open the Drinking Horse Mountain trail to the public in Summer 2008, but we need your contribution to reach the summit...*

### Funding Plan:

Individual & Business Donations	.....\$57,000
Foundation Grants	.....\$57,000
In-Kind Donations	.....\$14,000

### Estimated Costs:

Bridger Creek Bridge	.....\$68,000
Trail Building	.....\$35,000
Fencing	.....\$8,000
Benches & Signage	.....\$8,000
Project Management	.....\$9,000

**TOTAL..... \$128,000**



**Only \$30,000 left to go!**

Gallatin Valley Land Trust  
 P.O. Box 7021  
 Bozeman, MT 59715  
 (406) 587-8404 ~ [www.gvltr.org](http://www.gvltr.org) ~ [landtrust@gvltr.org](mailto:landtrust@gvltr.org)



## Hedvig's Trail

Memorial

“Buff in the Bozone”  
2007 calendar



# Snowfill



## Dog Recreation Area Landfill Parcel

Memorial  
Fencing  
Trails Day

MCC  
Matching Funds  
Fundraising

# Library Trail



**Library Bond**  
**CTEP Funding**  
**Park Improvement**  
**Funding**

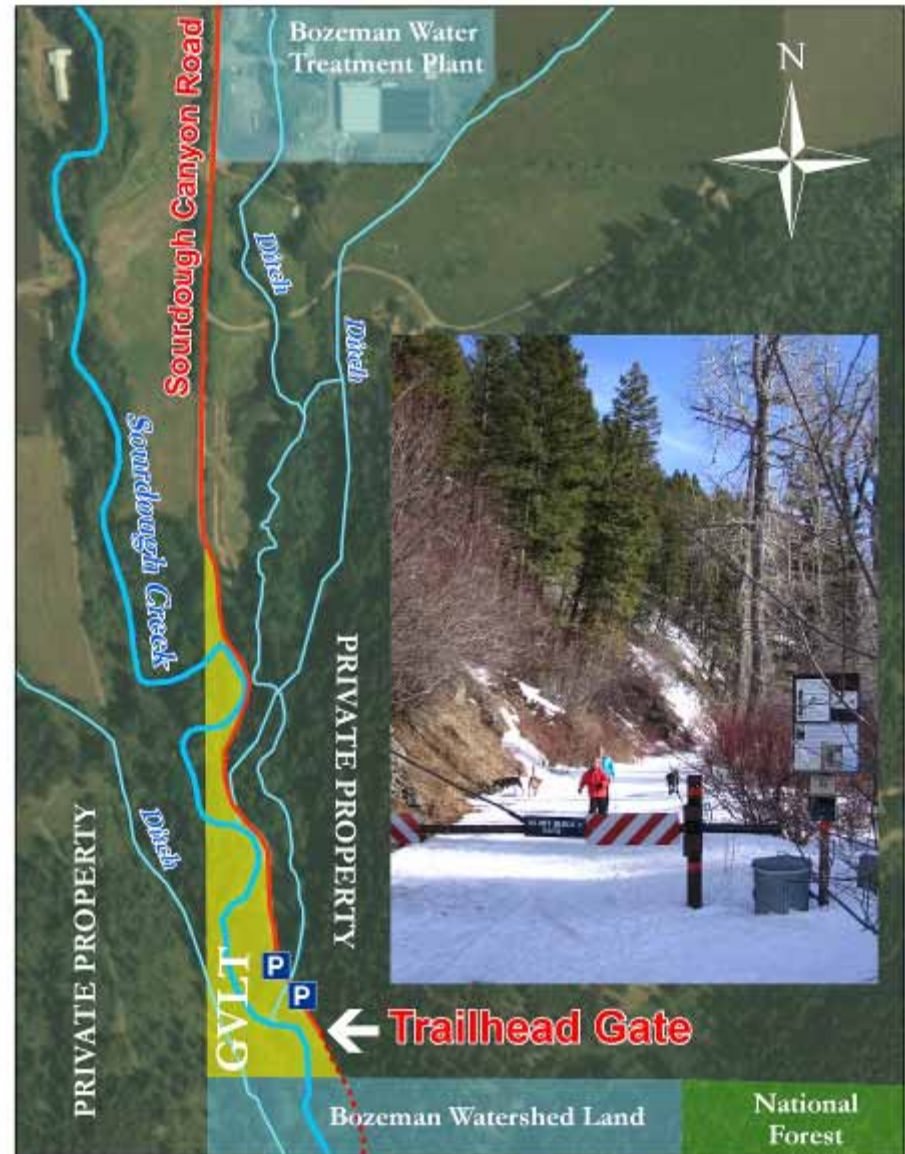
**Federal Earmark**  
**GVLT Involvement**

# Sourdough Trailhead

Land Donation

Stakeholders/Public  
Planning Process

Gallatin Valley Land Trust  
City of Bozeman  
US Forest Service  
County Road Department  
Montana Fish Wildlife and Parks  
Recreational Users  
Private Land Owners





**By Building Trails  
We Build Community**